



ArcFM Viewer

Query and Display Tool

The keys to a successful business implementation are flexibility, rapid deployment, and easy access to information. Telvent's ArcFM Viewer, part of the ArcFM Solution, provides a cost-effective, fast data browser to leverage and access all forms of enterprise GIS information within a utility.

ArcFM Viewer can be run on ESRI's ArcGIS® Engine or ArcView. The ArcEngine-based version provides for a powerful yet very inexpensive, small footprint viewing solution. The ArcView-based version allows a user to have access to all of the robust view, query, and analysis tools found in ArcView.

ArcFM Viewer provides a high-performance, robust query and display tool without the expense of a full editing package. Utility executives, managers, customer service representatives, and contractors all need the ability to analyze the asset data maintained by ArcFM. With ArcFM Viewer, utility personnel can view, trace, and query data

to help minimize cost or optimize the investment in maintenance and construction to get the most from the facility network.

Users already familiar with ArcFM will benefit from the common architecture and interface found within ArcFM Viewer. In addition, custom tools built for ArcFM are available in ArcFM Viewer.

Benefits

Cost Effective: Offers the power of ArcFM in a small footprint.

Powerful: Allows access to ArcFM geodatabase information along with powerful network tracing and query tools.

Convenient: ArcFM Viewer leverages the same viewing interface as ArcFM.

ArcFM Viewer comprises ArcFM's view, query, and tracing functionality. The components include:

- **Locator Tools** – ArcFM Viewer provides full functionality to locate features based on the ArcFM

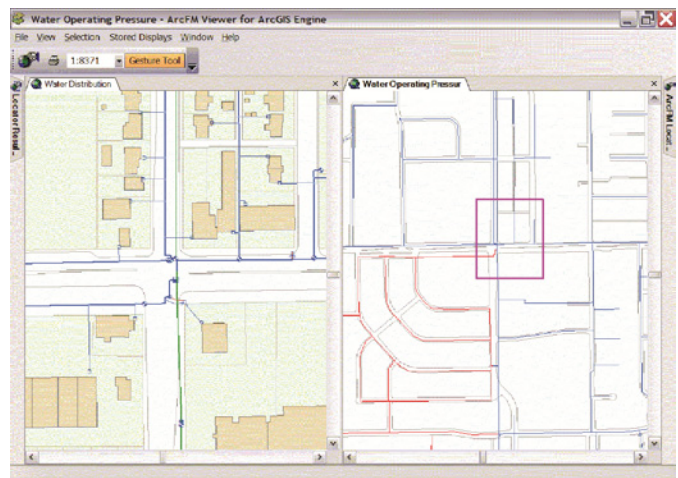
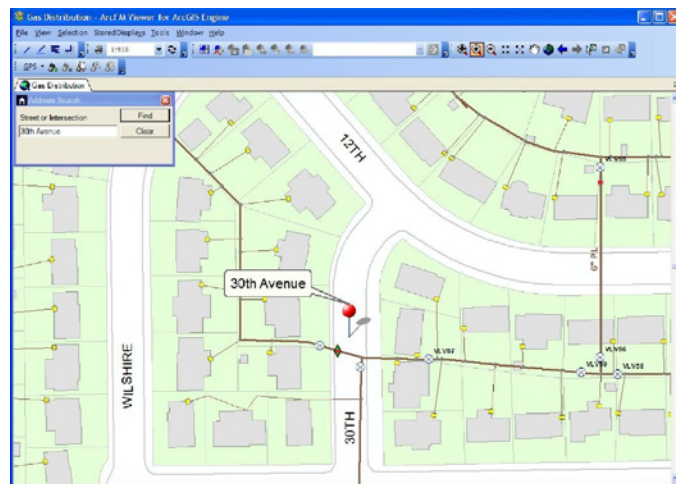
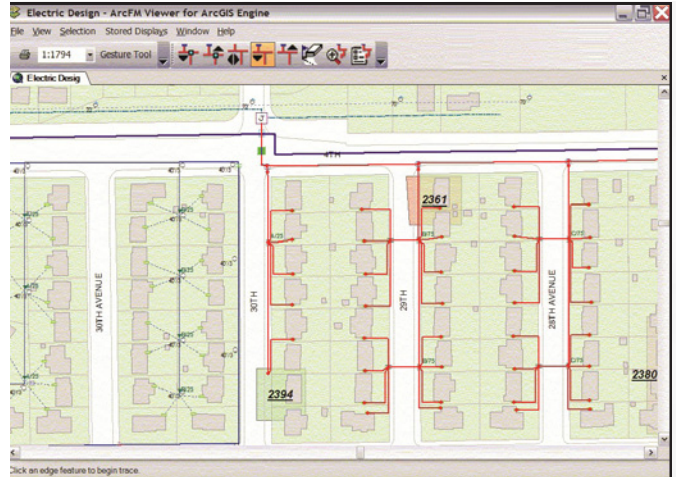
TELVENT
is part of

Schneider
Electric

www.telvent.com/smartgrid 1.866.537.1091

display field, XY coordinates, specific attributes, or an address or intersection.

- **Stored Displays** – This tool allows the user to set the standard symbology for features to be saved in the database rather than needing to pass/share a map document. Users may easily select a new collection of layers without closing/opening a new document. All Stored Displays defined for the ArcFM implementation are automatically available in ArcFM Viewer.
- **Page Templates** – Page layout templates, created in page layout mode in ArcMap, allow a user to define the size, orientation and graphic elements of a map document. Users may easily select a page template for their map layout without opening/closing a new document.
- **Trace Solvers** – Electric trace solvers allow users to trace electric distribution systems by phase and trace protective devices both upstream and downstream. Gas and water trace solvers depict natural gas or water as it flows through the distribution system. Utilities may also trace pressure systems, cathodic protection systems or trace lines to identify valves for emergency isolation.
- **Geodatabase Replication** – This tool provides Mobile users of ArcFM Viewer, Redliner, or Inspector with access to the most recent updates in the enterprise ArcSDE geodatabase.



TELVENT
is part of

Schneider
Electric

Our evolution to Schneider Electric, the global specialist in energy management, re-affirms our commitment to provide you with innovative solutions, best-in-class customer service, and exceptional quality in everything we do. We are proud to be your partner, and we are dedicated to helping you make the most of your energy.

www.telvent.com/smartgrid 1.866.537.1091

©2008-2011 Telvent is a trademark and the property of Telvent. All rights reserved. All other trademarks are the properties of their respective owners.