

Smart Information for a Sustainable World



ArcFM™ Viewer with Inspector Extension Cost-effective attribute updating saves resources, optimizes accuracy

Accurate and up-to-date representation of your network assets is necessary for maintenance efficiency, system improvements planning, and regulatory and safety compliance management.

Telvent's ArcFM™ Viewer with Inspector solution makes accurate network representation practical. It enables both desktop and field staff to update key attribute features efficiently to maintain an accurate database. Particularly valuable in the field, Inspector lets users view current database information and create, correct or update critical asset information while onsite – the best place to identify and capture information about your facilities. Inspector minimizes your total cost of ownership by:

- Simplifying the update process – easy user interface with minimal training needed
- Streamlining data transfer – directly updates the system of record; no data conversion steps are necessary

- Providing flexibility – user can easily configure new inspection types as needed

High mileage functionality serves all

Telvent ArcFM Viewer is part of the comprehensive Telvent ArcFM Enterprise GIS solution, based on the Esri ArcGIS® platform, and reflects Telvent's Mobile strategy for making utility network information available where and when needed. It is a cost-effective solution that makes viewing, tracing and querying the network database fast for users across utility business units.

The Inspector extension to Arc FM Viewer adds not only comprehensive redlining and sketching functionality within ArcFM GIS but also allows mobile users to:

- Update attributes – update existing attribute records via dialog
- Effectively manage related records – create and update related records of features to support workflows for joint-use attachments, cathodic protection, pole surveys, transformer audits, leak survey and management, and damage assessments

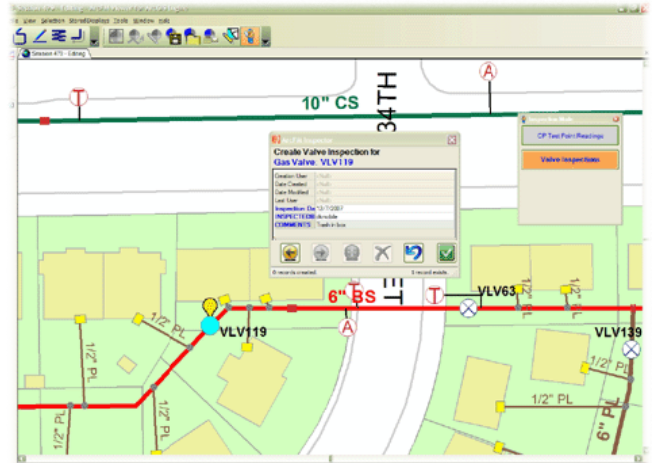
TELVENT

is part of

Schneider
Electric

- Incorporate updates – move graphic sessions back and forth from the desktop to the field through integration with ArcFM’s Session Manager or Designer’s Workflow Manager; workflows are flexible and configurable for job processes specific to your organization

As a result, everyone benefits from up-to-date information: field users have access to current information while onsite, editors can update the asset record quickly and planners and executives have better data with which to make important decisions.

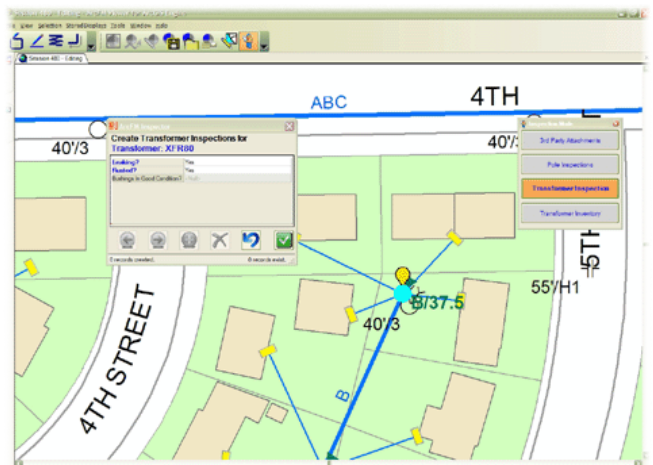


Valve Inspection.

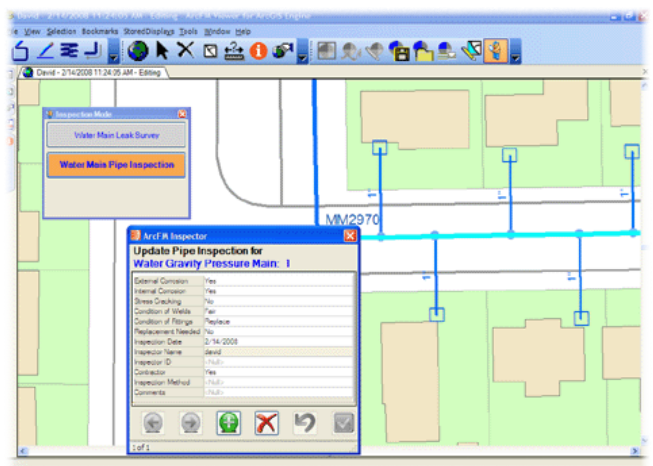
Fully integrated with ArcFM GIS

Using Inspector is an effective way to make easy updates to attribute data part of the field crew’s daily work. Further, because it is a tool within Telvent’s ArcFM Enterprise GIS solution suite, inspection updates are integrated into the utility’s ArcFM-based network database:

- Replicates the database – field crews work with the most current information and avoid potential conflicts or work duplication due to data latency
- Adheres to workflow management – strict controls are in place for inspection update data to be included in your system-of-record
- Uses the same spatial data store as ArcFM GIS – no complex and expensive data conversion required
- Applies enterprise configurations – standardizes data gathering, content and graphical display and enables easy configuration of new inspection types without writing a single line of code



Transformer Inspection.



Water Inspection.

TELVENT
is part of

Schneider
Electric

This seamless integration with ArcFM GIS enables flow of data from the enterprise GIS to field units and back again – fast, securely and accurately – so everyone can rely on the network representation to support their daily tasks and decision making.

Optimize your resources

Telvent's extensive, industry-specific experience allows us to develop solutions that prove effective for electric, gas and water utilities worldwide. Based on that expertise, we created the ArcFM Viewer with Inspector Extension to help you extend the value of your GIS and save time and cost, every day. Contact Telvent or your ArcFM GIS representative for more information.

TELVENT
is part of

Schneider
Electric

Our evolution to Schneider Electric, the global specialist in energy management, re-affirms our commitment to provide you with innovative solutions, best-in-class customer service, and exceptional quality in everything we do. We are proud to be your partner, and we are dedicated to helping you make the most of your energy.

www.telvent.com/smartgrid 1.866.537.1091

©2011 Telvent is a trademark and the property of Telvent. All rights reserved. All other trademarks are the properties of their respective owners.