

Smart Information for a Sustainable World



## Telvent Energy ArcFM™

### Enterprise GIS Solution for Water, Wastewater, and Stormwater Utilities

In today's highly competitive environment, utility companies require a more cost-effective use of distribution assets through targeted investment for maintenance and growth. Utilities face tighter information technology (IT) budgets, reduced in-house development staff, and the need to quickly deliver business benefits through applications. ArcFM provides a complete, out-of-the-box solution for facilities management designed to meet the needs of the water industry.

ArcFM, a powerful extension of ESRI's ArcGIS® platform, is a complete enterprise utility solution for editing, modeling, maintenance, and management of facility and land base information for water, wastewater, and stormwater utilities.

ArcFM takes advantage of an industry-standard architecture and programming environments, an easy-to-use interface, and powerful cartographic tools, giving utilities in the water market an optimized solution for the entire organization.

The ArcFM Solution allows utility businesses to make use of a single integrated environment to manage and map multiple assets, leveraging all the power of ArcGIS's object-oriented architecture.

ArcFM fits into the overall information technology architecture of modern utilities through the use of open databases, industry-standard programming environments, and COM architecture. It leverages technology that is configurable and easily aligned to multiple processes using a unified strategic platform. ArcFM provides a scalable architecture for the full range of utility business needs, and can be used for a single departmental installation or as a multi-departmental enterprise configuration for creating, managing, and disseminating utility information.

ArcFM consists of a set of industry standard data models and a set of sophisticated tools that provide a comprehensive enterprise solution for water, wastewater, and stormwater utilities. ArcFM allows maintenance and viewing of data, using company-wide business rules, and includes applications to configure the data models and tools to work together.

- **Enterprise Implementation** — ArcFM provides a collection of tools to assist the water utility in deploying the object model quickly and easily to all users. Tools for defining and storing map symbology, page templates for streamlined editing, and system favorites that ensure standards are followed are also included.
- **Geodatabase Extensions** — ArcFM provides tools necessary to successfully implement ESRI's GeoDatabase for water

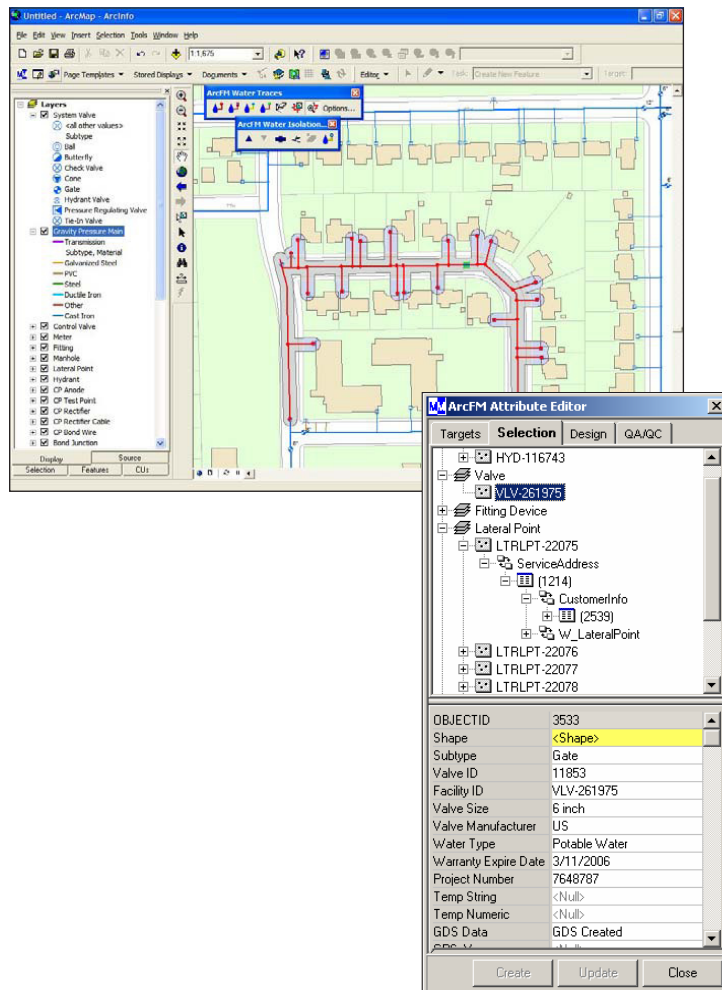
TELVENT  
is part of

Schneider  
Electric

[www.telvent.com/smartgrid](http://www.telvent.com/smartgrid) 1.866.537.1091

utilities including persistent snapping, business rules for feature classes and individual fields and data validation.

- **Map Production** — ArcFM provides the ability to quickly define and recall map sheet collections for map book production. Plots can be sent immediately to print or scheduled for a specific date and time.
- **Composite Favorites** — ArcFM provides tools to allow the user to easily place and manipulate multiple features with one click using composite favorites for facilities such as pumping stations.
- **Template Tool** — Places several features using utility standards and default attributes to be placed at one time, such as a service drop with a tap fitting, pipe, and meter.
- **Productivity Tools** — ArcFM provides a full suite of editing tools from automated template layouts, to attribute inheritance, to creation of user favorites, allowing each users' experience to be unique and flexible.
- **Utility Specific Tracing** — ArcFM enhances the standard tracing tools to automate utility operations such as identifying cathodic protection zones, determining water distribution area from a specific pumping station or tank, and locating pressure systems and valves to be isolated.
- **Abandonment** — ArcFM provides tools to support pipe abandonment including abandon, remove, or convert to conduit.
- **QA/QC** — ArcFM provides an intuitive interface to validate features based on geodatabase rules to identify invalid features. Users can then generate a report and correct the errors.
- **Session Manager** — ArcFM provides the ability to establish and enforce specific workflows by providing tools to set permissions, define user roles, create subtasks, and execute a predefined approval process.



**TELVENT**  
is part of

**Schneider**  
Electric

Our evolution to Schneider Electric, the global specialist in energy management, re-affirms our commitment to provide you with innovative solutions, best-in-class customer service, and exceptional quality in everything we do. We are proud to be your partner, and we are dedicated to helping you make the most of your energy.

[www.telvent.com/smartgrid](http://www.telvent.com/smartgrid) 1.866.537.1091

©2010-2011 Telvent is a trademark and the property of Telvent. All rights reserved. All other trademarks are the properties of their respective owners.

Rev 0811