

Smart Information for a Sustainable World



## Telvent Energy

# Smart Grid Solutions Suite: Designer

Streamline your engineering process from design to install. Reduce cost, eliminate duplication and improve efficiency with Designer from Telvent

In many distribution and engineering planning groups, a diverse set of tools are used by a wide range of staff with skill sets that vary substantially. Often, those tools don't work seamlessly with the utility's GIS platform, which creates redundant data management processes, duplication of efforts and workflow backlogs. More often than not, executives leading these groups determine that this scenario creates costly project management headaches and inefficiency.

These are the challenges that Telvent solves with Designer, a robust design, workflow and asset management tool, created specifically to meet the needs of medium to large electric distribution utilities.

**Designer** streamlines the entire design, estimating, construction and as-built workflow process. In doing so, it supports all of your viewing and analysis needs and completely eliminates the need to manage multiple data models. Because it's a fully integrated extension of the popular ArcFMTM platform and operates on the same GIS data model, Designer reduces your cost of ownership and

allows you to integrate design and planning work with other important GIS-driven applications like OMS and DMS.

With Designer, you get an engineering solution that drives bottom line improvement in your project design and construction work and supports better data management and transparency across your larger enterprise.

### Graphic design and much, much more

Don't let the name fool you: Designer is much more than a graphic layout tool. It's an integrated project management system that allows the user to create construction work sketches and prepare cost estimates with seamless access to the tools of your work management system/enterprise resource planning (WMS/ERP) to provide detailed work requests, scheduling and material costing information.

The system establishes a single point of entry for all asset information and includes a comprehensive set of construction drawing tools, compatible unit management functions and engineering tools. It enables your staff to conduct low voltage circuit analysis, perform structural analysis, optimize underground residential developments, plan cable pulling and properly plan overhead line construction.

**TELVENT**  
is part of

**Schneider**  
Electric

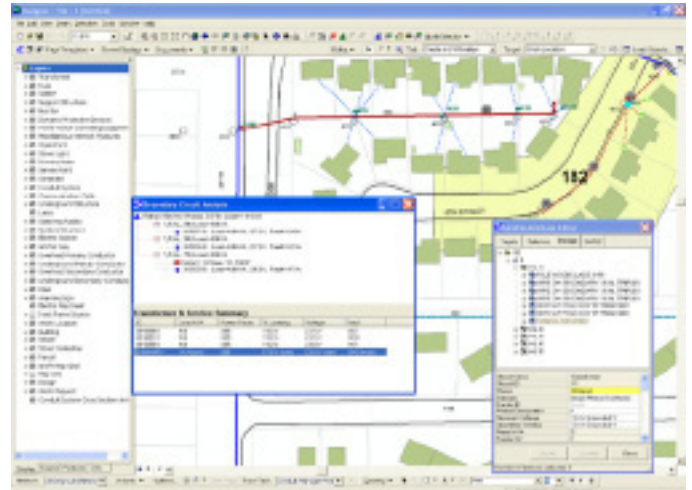
Throughout the project lifecycle, Designer keeps the entire project organized and up to date, managing both the design documents and asset data. All compatible unit, extended data, work locations and graphic work are stored with the design, including records of installs, removes, and transfers. You can even account for external factors such as hot vs. cold work, heavy traffic or contract crews.

Designer also gives you tools to create, control and manage multiple designs, design versions, work requests and input from multiple staff members involved in any project. Within the GIS database, users may view, query and edit designs without needing to copy files around the network. Designer comes standard with a flexible workflow process tool called Workflow Manager, which can operate in a standalone mode or as the integration point to the work management system.

## Powerful engineering and analysis tools

Knowing that the engineering integrity of your design work is paramount, we built Designer with a broad set of engineering analysis tools that assure quality on every project. With Designer, you get tools like these:

- **URD Optimization** allows the user to interactively design using optimization and automation tools. This tool takes into consideration site conditions, design parameters, and exclusion zones and supports parcel aggregation and transformer, conductor, and service-optimal sizing and placement. This functionality not only ensures optimal design, it helps reduce costs and avoid excess material use.



- **Structural analysis** includes conductor clearance, ruling span, transverse pole strength, pin and insulator, soil and anchor, bisector and dead end guying analysis.
- **Secondary (low voltage) circuit analysis** will determine if voltage drop, flicker, motor starting or transformer loading rules have been violated.
- **Compatible unit management tools** make Designer ideal for utilities that have extensive compatible unit (CU) needs, supporting individual projects involving one or many compatible units (CU). Our CU tools enable quick and easy search and placement of CUs into the design. You can group your construction favorites for quick retrieval of the most common CUs. You can also place CU's into templates that define common construction standards that require multiple work locations, such as an overhead extension.

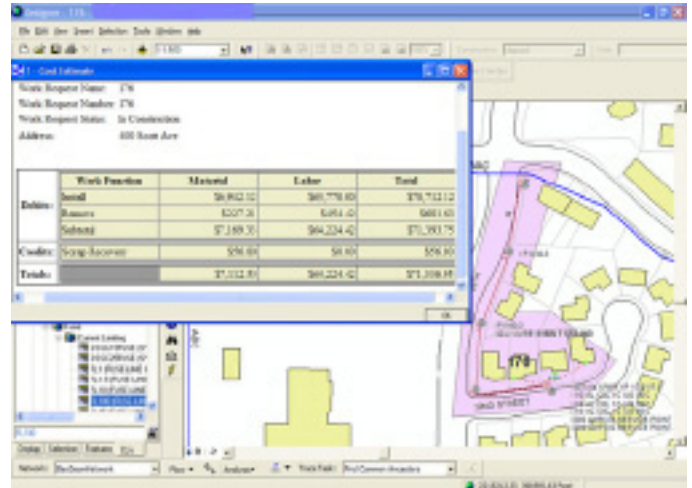
With its powerful data management and quality assurance features, you'll find that from modest to very complex projects, Designer is the ideal application for all of your design needs.

**TELVENT**  
is part of

**Schneider**  
Electric

## GIS Integration saves money and time

Designer is an extension of the ArcFM GIS environment, so it works on the same data model as the GIS, greatly reducing implementation and maintenance costs. This GIS integration creates a single point of data entry that eliminates the time, cost and mistakes involved in duplicate entry or conversion of data from one system to another. It also enables automation of updates and workflow, so when work orders and design revisions are posted, the GIS data is also updated. This greatly reduces backlog in the GIS system, allowing current information to be retrieved or supplied to other mission critical applications such as OMS and DMS.



## Take another step closer to the Smart Grid

Designer from Telvent is just one component in our Smart Grid Solutions Suite, a comprehensive toolset created to help energy providers efficiently plan, design and reliably operate the grid. With capabilities that include data collection and monitoring, grid analytics, rules-based economic decision-making tools and the ability to integrate with traditional business software, the Telvent Smart Grid Solutions Suite can help every utility transition into a next-generation energy provider.

**TELVENT**  
is part of

**Schneider**  
Electric

Our evolution to Schneider Electric, the global specialist in energy management, re-affirms our commitment to provide you with innovative solutions, best-in-class customer service, and exceptional quality in everything we do. We are proud to be your partner, and we are dedicated to helping you make the most of your energy.

[www.telvent.com/smartgrid](http://www.telvent.com/smartgrid) 1.866.537.1091

©2011 Telvent is a trademark and the property of Telvent. All rights reserved. All other trademarks are the properties of their respective owners.