

Smart Information for a Sustainable World



## Telvent Energy **Fiber Manager**

Shouldn't your asset management system be as advanced as your network?

### **Map, plan, design and manage your fiber optic network with GIS-based Fiber Manager from Telvent.**

Are you managing a next-generation telecommunications network with last-generation tools? A surprising number of fiber optic companies are doing just that by documenting their network with file-based technology. They're using information in several formats—CAD drawings, spreadsheets, Visio diagrams—spread out across their enterprise network making critical decisions about their network.

Or worse, they're relying on human memory, and all that vital information about their network assets will walk out the door when those valued employees leave.

When you're managing a fiber optic network from a central office, searching for buried assets on site, or planning a future system expansion, you need accurate information that's mapped to your physical network. And you need access to it from anywhere—in the field, at the desktop, or in the boardroom.

That's the beauty of Fiber Manager from Telvent. As an extension of the ArcFM™ Enterprise Solution, Fiber Manager delivers the same relevant geographic information system (GIS) datasets used by other utilities.

### **A more efficient way to look at your network.**

With Fiber Manager, you'll have an intuitive, visual interface to help you understand and manage your entire fiber optic network—a productivity tool for the office, plus mobile solutions for outside plant (OSP) and inside plant (ISP) networks.

Fiber Manager delivers information in a seamless, map-based data format and provides a breadth of productivity tools, including:

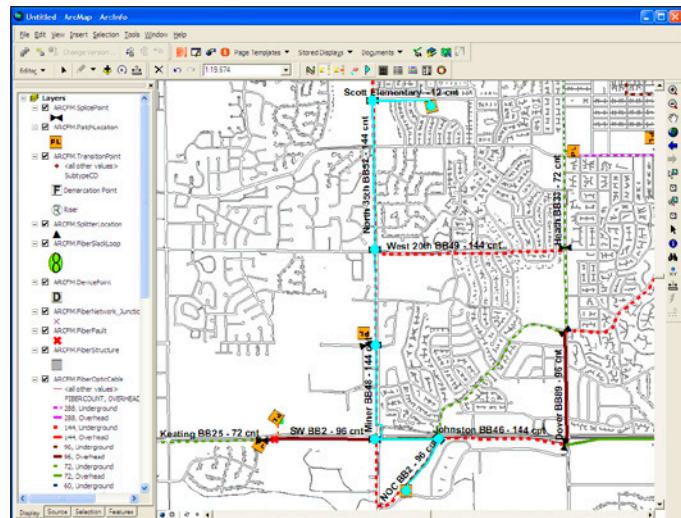
- **Connection Manager** – The Connection Manager makes it easy to enter, update and understand the connectivity of your network. With this industry-leading productivity tool, you'll be able to quickly establish and inspect connections within splice enclosures, patch panels, optical network devices and passive optical network (PON) splitters used in fiber-to-the-home (FTTH) applications. Simply put, Connection Manager is the industry's easiest way to input connectivity data, saving you time and money.

**TELVENT**  
is part of

**Schneider**  
Electric

[www.telvent.com/smartgrid](http://www.telvent.com/smartgrid) +1.866.537.1091

- **Circuit Manager** – When you need to manage certain fiber paths in the network as a single unit, just use Circuit Manager. It allows you to establish a named optical path from one part of your network to another. Even though it comprises many elements—such as fibers, splices and ports—this named circuit can be managed as a single entity within your network, and can include point-to-point connectivity between the central office or NOC and a customer site.
- **Optical Time Domain Reflectometer (OTDR) Outage Trace** – By using the robust connectivity and optical distance data stored in Fiber Manager, this essential tool can precisely pinpoint the location of an outage or trouble area in your network. You'll dispatch repair crews more quickly, saving time and money, restoring the network in the shortest time possible.
- **Location Editor** – The Location Editor allows you to quickly reconfigure patch panels, equipment and racks at a client site or network location. A simple, efficient productivity tool, Location Editor uses existing ArcFM Favorites to create new configurations.
- **Reports** – Fiber Manager delivers reports enabling you to analyze network data. With these reports, you'll be able to see connectivity within splice enclosures, patch panels and circuits, plus discover available capacity in the system. Ready-to-use reports include:
  - Splice Report
  - Splice Schematic
  - Patch Panel Report



Above: Fiber Manager trace

- Connectivity Report
- Circuit Report
- OTDR Trace Report

### Built on a sound foundation.

Fiber Manager is an extension of Telvent's ArcFM Enterprise Solution, which is based on the ESRI ArcGIS® platform. ArcFM provides a graphical, data-rich environment that displays the information utilities need for maximum reliability and efficiency. Developed as a complete enterprise solution for an entire organization, ArcFM offers a map-centric, intuitive way to model, design, maintain, and manage facility and land base information.

That's why hundreds of utilities worldwide have adopted ArcFM for their design and asset management technology. Now with Fiber Manager, fiber optic companies—and any organization that operates a fiber optic network—can also leverage the full power of the ArcFM platform.

Your fiber optic network is too important to manage with an outdated, cumbersome file-based system. So why not

**TELVENT**  
is part of

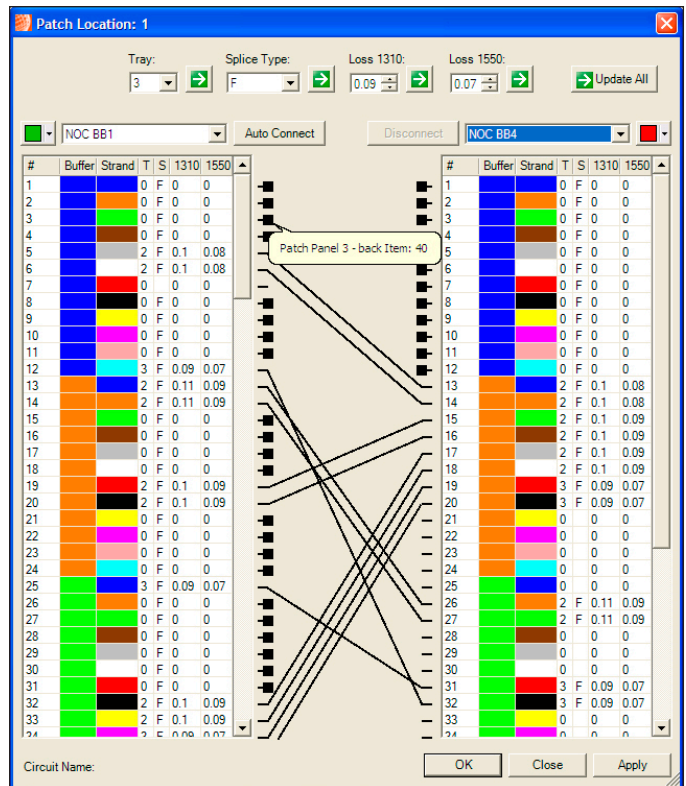
**Schneider**  
Electric

transition to an advanced solution that seamlessly organizes and analyzes the volume of data produced by your network? That's Fiber Manager from Telvent.

## Take another step closer to the Smart Grid.

Fiber Manager from Telvent is just one component in our Smart Grid Solutions Suite, a comprehensive toolset created to help energy providers efficiently plan, design and reliably operate the grid. With capabilities that include data collection and monitoring, grid analytics, rules-based economic decision-making tools and the ability to integrate with traditional business software, the Telvent Smart Grid Solutions Suite can help every utility transition into a next-generation energy provider.

For more information, contact us at 1 866 537 1091 or at [smartgrid@telvent.com](mailto:smartgrid@telvent.com).



Above: Fiber Manager's Connection Manager

**TELVENT**  
is part of

**Schneider**  
Electric

Our evolution to Schneider Electric, the global specialist in energy management, re-affirms our commitment to provide you with innovative solutions, best-in-class customer service, and exceptional quality in everything we do. We are proud to be your partner, and we are dedicated to helping you make the most of your energy.

[www.telvent.com/smartgrid](http://www.telvent.com/smartgrid) 1.866.537.1091

©2010-2011 Telvent is a trademark and the property of Telvent. All rights reserved. All other trademarks are the properties of their respective owners.